



MV BULKER BEE 10

GENERAL PARTICIPANTS

Name	BULKER BEE 10
Flag	NETHERLANDS
Call-sign	PCKH
IMO-no.	9507087
Port of registry	AMSTERDAM
Year built/shipyard	2010 / SEFINE SHIPYARD
Ice-class	N/A
P&I	UK P&I
Class	RINA
NAABSA	N/A
ITF	CERTIFIED
A60 Bulkhead	YES
Grainfitted	YES
Dangerous goods fitted	YES

TECHNICAL PARTICULARS

Main engine	MAN B&W 6S35MC Mk-7/ 440KW
Speed loaded	10.0 KTS
Speed ballast	11.0 KTS
Consumption at sea	13.0 MT/DAY
Fuel type Main Engine	VLSFO
Fuel type Aux. Engine	LSMGO
Bowthruster fitted	YES
Bunker capacity	553.2 CBM (90 %)
Freshwater capacity	167.55 CBM
Ballastwater capacity	4388.67 CBM
Deballasting speed cbm/hour	400 CBM/HR
Lub oil capacity	67.821 CBM
Batteries	24V
Shorepower	440V

VESSEL PARTICULARS

LOA	134.71 M
LBP	126.94 M
Beam	20.50 M
Depth Mid	11 M
Draft Summer	8.471 M
Draft Winter	8.295 M
Ballast draft	4.507 M
GT	9514 GRT
NT	4316
Displacement	18100.7 MT
Deadweight	13783 MT
DWCC Summer	13783 MT
DWCC Winter	13362 MT
Airdraft ballast/laden	35.493 / 31.5 MTRS
Distance WLTHC in full ballast	9.2 MTRS
Immersion/TPC	25.23
Collapsible foremast	NO

VESSEL CONTACT

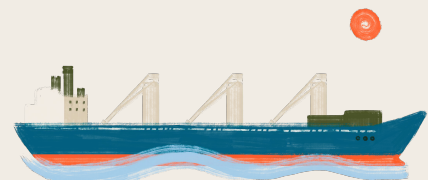
✉ E: bulkerbee10@gmailplus.com

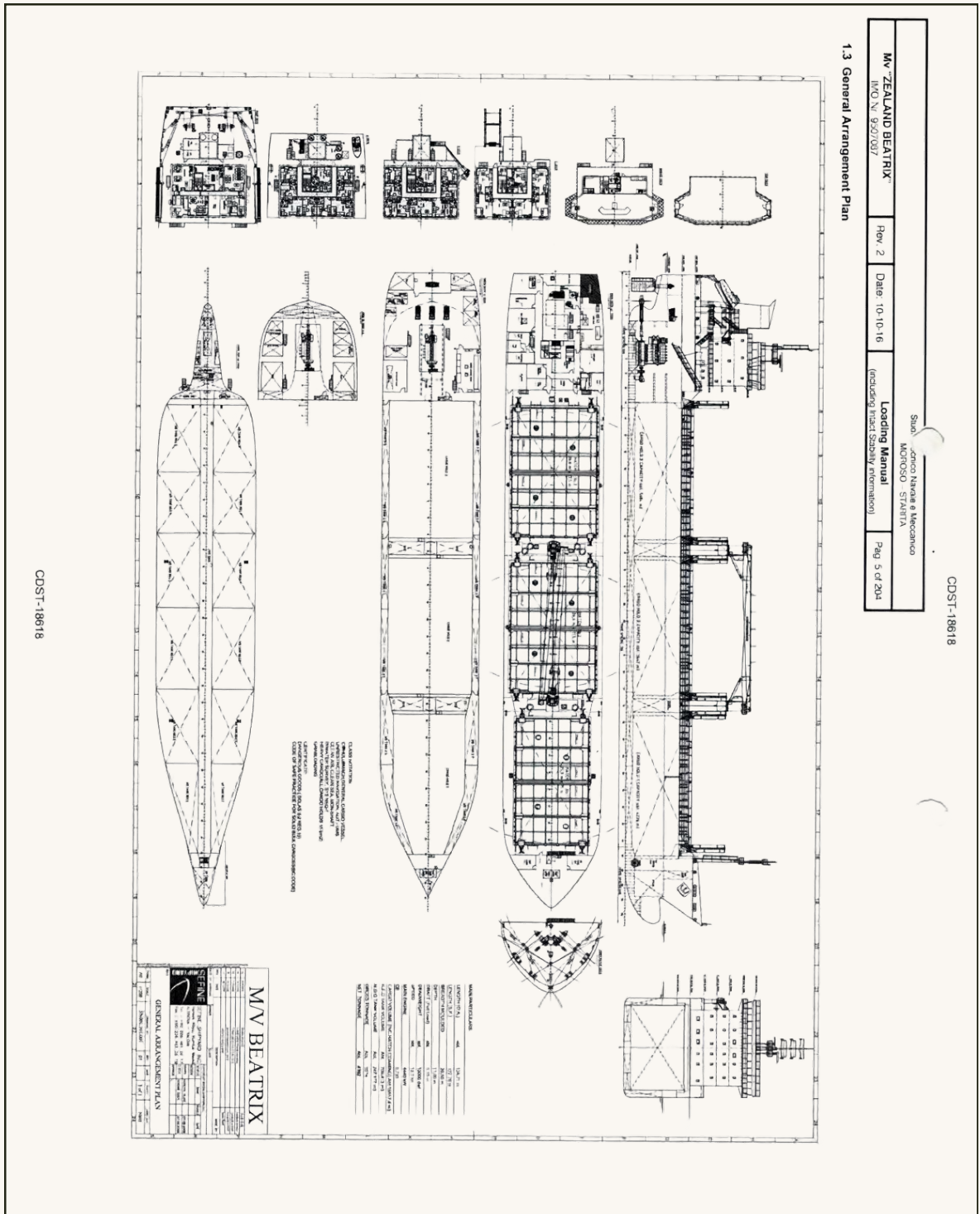
☎ MOB: +44 797 822 7963

☎ SAT: +870 773 136 757

HOLD PARTICULARS

No. Of holds/hatches	3 / 3
Hold(s)capacity	GRAIN 15558 CBM / 549409 CBFT
Box shaped	YES
Length of hold	26.22 M / 27.93 M / 27.23 M
Width of hold	14.98 M / 17.48 M / 17.48 M
Height of hold	11.68 M / 11.68 M / 11.65 M
Type of hatches	HYDRAULIC FOLDING TYPE
Hatch Dimension (LxW)	26.22 - 27.23 x 3.80 - 17.48
Number of tweendecks	NONE
Number of bulkheads	N/A
Number of bulkheads position	N/A
Strongbeam	N/A
Cement holes/diameter	110 CM
Tank top/hatch cover strength	15 MT/ M2
Max steel coil weight	MAX 2 TIERS 23-25 MT
Tweendeck strength	N/A
Ventilation (air changes/h)	N/A
Vent. mechanical or electrical	ELECTRICAL
CO2 fitted	YES





Navi Merchants A/S

📍 Pakhus 48, Klubiensvej 22, DK-2150 Nordhavn

✉ E: chartering@navimerchants.com

✉ E: operations@navimerchants.com

🌐 Copenhagen, Denmark

☎ +45 3996 5320

🌐 www.navimerchants.com

